

FLORENCE & CHAFETZ HILLEL HOUSE

BOSTON UNIVERSITY

BOSTON, MASSACHUSETTS

- OWNER
Boston University/Hillel
- ARCHITECT
Steffian Bradley Architects
- CONSTRUCTION COST
\$12,000,000 +/-
- CONSTRUCTION MANAGER
Jackson Construction Company



Rendering by Steffian Bradley

PROJECT DESCRIPTION

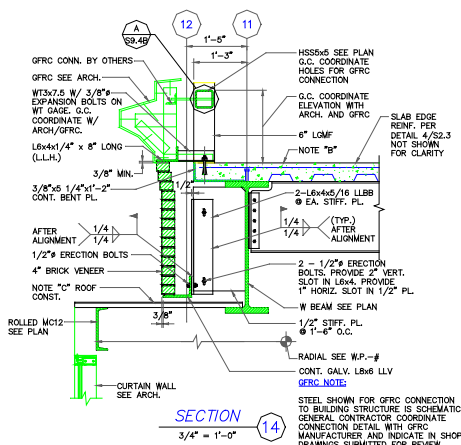
This four-story structure on the banks of the Charles River is a steel framed, composite concrete floor building housing various spaces for Jewish students at Boston University.

The building is a combination of steel concentrically braced frames and ordinary steel moment frames for lateral resistance. Braced frames were provided perpendicular to adjacent existing construction to reduce the size of an unsightly expansion joint.

The lower floors are conventionally framed composite construction. The upper two floors are clear spans for dining, dancing and worship spaces and required additional analyses and details for vibration.

Due to poor site conditions, the existing water table and temporary construction requirements on a tight site, our office suggested, designed and detailed a concrete mat foundation. This eliminated the need for deep foundations and simplified the proposed spread footing and “pressure-slab” system.

DM Berg coordinated with the various façade manufacturers and suppliers to provide supplementary steel framing for veneers that included limestone, brick, metal panel, curtain wall and GFRC.



DM BERG CONSULTANTS, P.C.
SERVING THE INDUSTRY SINCE 1963

CONSULTING ENGINEERS
570 Hillside Avenue
Needham, MA
02494-1297
p 781 444-5156
f 781 444-5157
www.dmberg.com